

TABLE A - TAPER LENGTHS									
Taper Types (m)	Regulatory Speed Limit before Work Begins (km/h)								
	≤ 50	60	70	80	90	100	110	120	
Merge Taper Length	1 _w	35	55	160	190	210	230	250	280
Lane Shift Taper Length	1 _s	30	50	80	100	110	120	130	140
Downstream Taper Length	1 _d	30	30	30	30	30	30	30	30
TCP, Signal, and Shoulder Taper Length (min. 5 devices)	1 _t	5	8	15	15	15	15	15	15
Minimum Tangent Length between Tapers	1 _l	30	60	160	190	210	230	250	280
Run-in Length on Centreline	1 _r	40	50	60	60	70	80	90	100

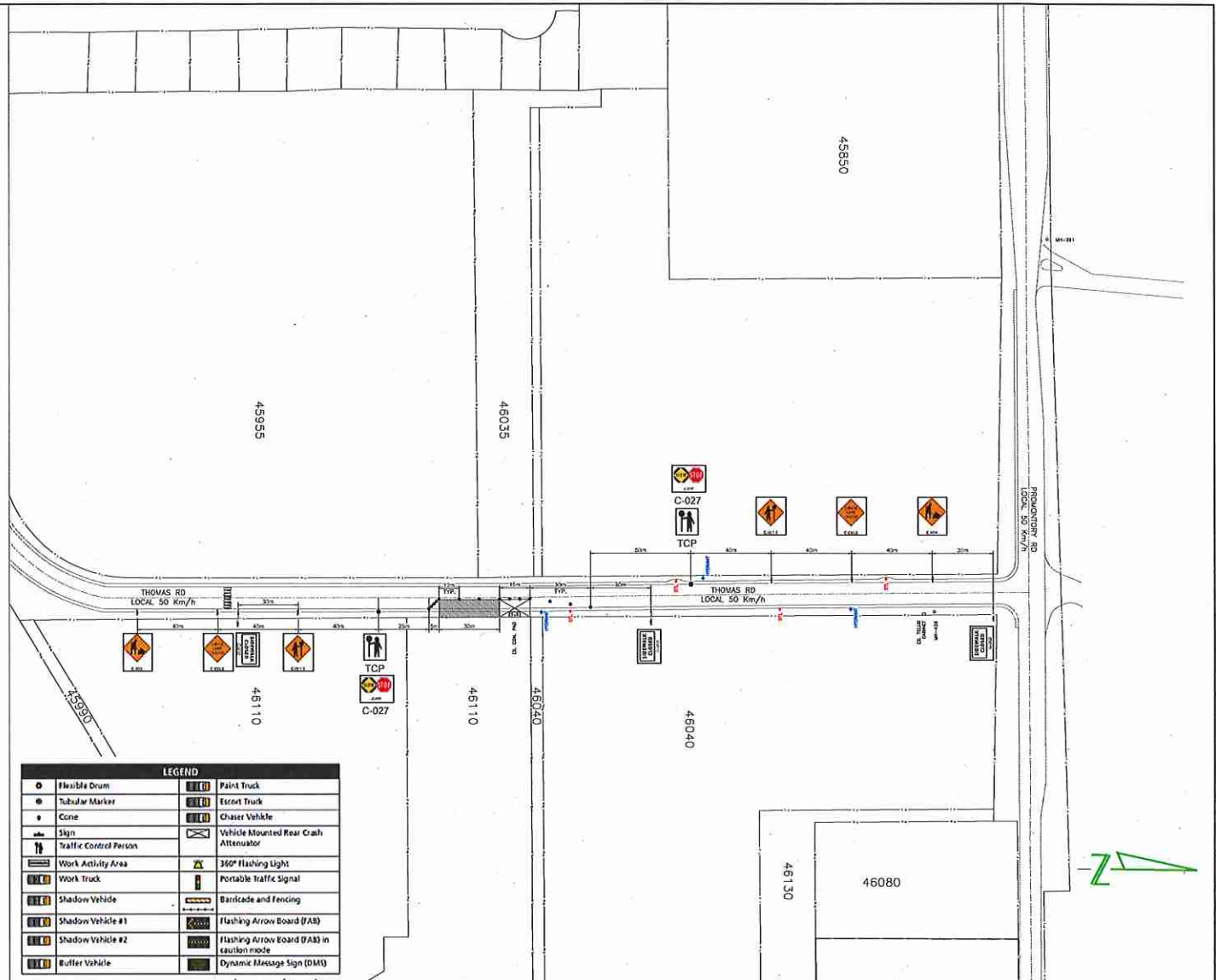
TABLE B - DEVICE SPACING LENGTHS									
Device Spacing (m)	Regulatory Speed Limit before Work Begins (km/h)								
	≤ 50	60	70	80	90	100	110	120	
Construction Sign Spacing	A	40	60	80	100	150	200	200	200
Buffer Space	B	30	40	60	80	110	140	170	200
Channelizing Device Spacing for Tapers	C	10	10	15	15	15	15	15	15
Channelizing Device Spacing on Curves and Tangents	D	10	10	30	30	40	40	40	50

NOTES:

1. THE WORK REQUIRING THE TRAFFIC CONTROL MEASURE INVOLVES THE INSTALLATION OF A FDH CABINET COMPLETE WITH PLACING AND SPLICING OF FIBER OPTIC CABLE AT EXISTING CONC. PAD LOCATED ON THE EAST SIDE OF THOMAS RD. (APPROX. 255.3 m SOUTH OF PROMONTORY RD). THE DURATION OF USE OF THIS MEASURE WILL BE UNTIL THE WORK IS COMPLETED.
2. LANE CLOSURES ARE AS NOTED IN THIS LAYOUT.
3. TIMING OF THE WORKS WILL BE FROM MONDAY TO FRIDAY, 8:00AM TO 4:30 PM.
4. LOCATION OF THE WORK ZONE IS AS INDICATED ON THIS PLAN FOR CONSTRUCTION.
5. THE MEASURES SHOWN IN THIS TRAFFIC MANAGEMENT PLAN IS IN ACCORDANCE TO THE "BC TRAFFIC MANAGEMENT MANUAL FOR WORK ON ROADWAYS (2015 INTERIM)". CHANGES TO THIS LAYOUT MAY BE MADE BY THE TRAFFIC CONTROL PERSON IN CHARGE TO REFLECT FIELD CONDITIONS.
6. PRIORITY ACCESS WILL BE GIVEN TO EMERGENCY VEHICLES.
7. ALL DIMENSIONS ARE IN METRES.

CONTACT INFORMATION:

ALEC LUNDE:
C: 778-837-4642



LEGEND			
○	Flexible Drum	🚚	Paint Truck
●	Tubular Marker	🚚	Escort Truck
●	Cone	🚚	Chaser Vehicle
🚚	Sign	🚗	Vehicle Mounted Rear Crash Attenuator
👤	Traffic Control Person	🚚	360° Flashing Light
🚚	Work Activity Area	🚚	Portable Traffic Signal
🚚	Work Truck	🚚	Barricade and Fencing
🚚	Shadow Vehicle	🚚	Flashing Arrow Board (FAB)
🚚	Shadow Vehicle #1	🚚	Flashing Arrow Board (FAB) in caution mode
🚚	Shadow Vehicle #2	🚚	Dynamic Message Sign (DMS)
🚚	Buffer Vehicle		

BC ONE CALL

CALL BEFORE YOU DIG
1 800-474-6886
VANCOUVER AREA
604-257-1940



CONSTRUCTION	PERMIT	DESIGN: DM	DIV: DM
REV. DESCRIPTION	SUBMITTED DATE:	04-23-1947	SCALE: NTS
REV. DESCRIPTION	RESUB DATE:		DATE: 11/01/17
REV. DESCRIPTION	REV. DATE:		ASSOCIATED DRAWINGS:
REV. DESCRIPTION	APPROVED:	1.	
REV. DESCRIPTION	DATE:	2.	
REV. DESCRIPTION	AS CONSTRUCTED DATE:	3.	
REV. DESCRIPTION	CONTRACTOR:	4.	

THE WORK PROPOSED ON THIS DRAWING IS ALL THE PROPERTY OF TELUS
PROPOSED TRAFFIC CONTROL LAYOUT
TO ACCOMMODATE FDH CABINET INSTALLATION,
TELECOM CABLE PLACING AND SPLICING

EAST SIDE OF THOMAS RD
WEST OF #55110

SYSTEM NAME:
2636305

SHEET 1

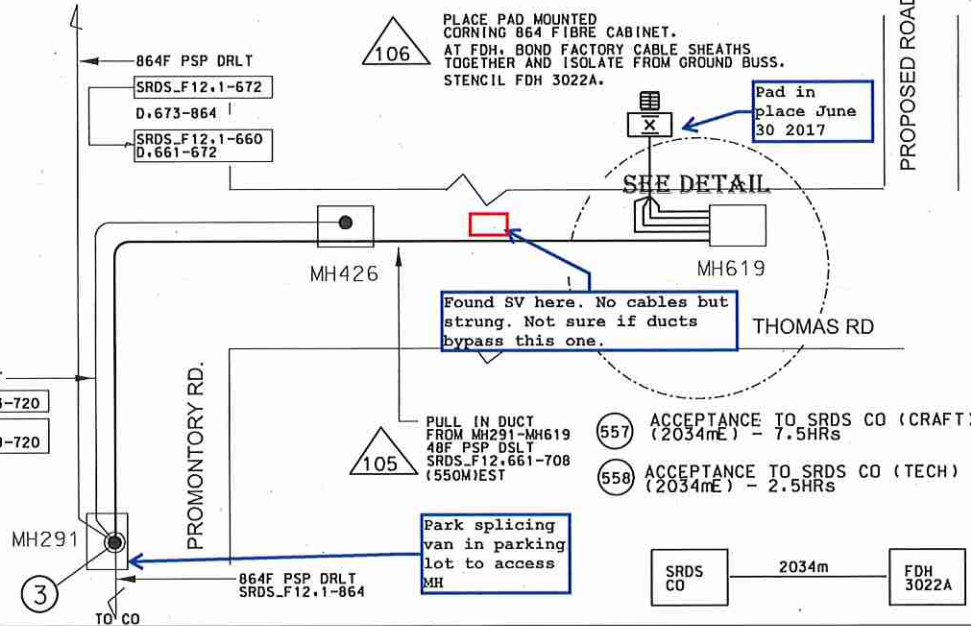


1 PLACE SPLITTERS X8

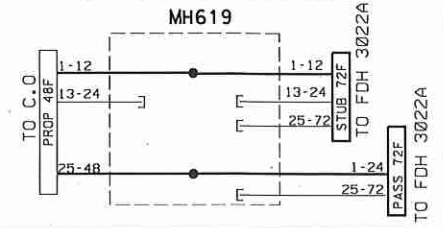
- 1 1X32 S-LOSS SCAPC
SRDS_F12.661
SPLTR1,1-32
- 2 1X32 S-LOSS SCAPC
SRDS_F12.662
SPLTR2,1-32
- 3 1X32 S-LOSS SCAPC
SRDS_F12.663
SPLTR1,1-32
- 4 1X32 S-LOSS SCAPC
SRDS_F12.664
SPLTR2,1-32
- 5 1X32 S-LOSS SCAPC
SRDS_F12.665
SPLTR2,1-32
- 6 1X32 S-LOSS SCAPC
SRDS_F12.666
SPLTR2,1-32
- 7 1X32 S-LOSS SCAPC
SRDS_F12.667
SPLTR2,1-32
- 8 1X32 S-LOSS SCAPC
SRDS_F12.668
SPLTR2,1-32

- 3022A
1 FIBRE XCONN
- IN 1-12 = SRDS_F12.661-672
 - IN 13-24 = D.13-24
 - IN 25-72 = D.25-72
 - IN 73-96 = SRDS_F12.685-708
 - IN 97-144 = PASS.25-72
 - IN 145-176 = SPLTR1,1-32
 - IN 177-208 = SPLTR2,1-32
 - IN 209-240 = SPLTR3,1-32
 - IN 241-272 = SPLTR4,1-32
 - IN 273-304 = SPLTR5,1-32
 - IN 305-336 = SPLTR6,1-32
 - IN 337-368 = SPLTR7,1-32
 - IN 369-400 = SPLTR8,1-32
 - IN 401-1008 = SPI.257-864
 - OUT 1-432 = 3022A,1-432
 - OUT 433-864 = 3022A,433-864

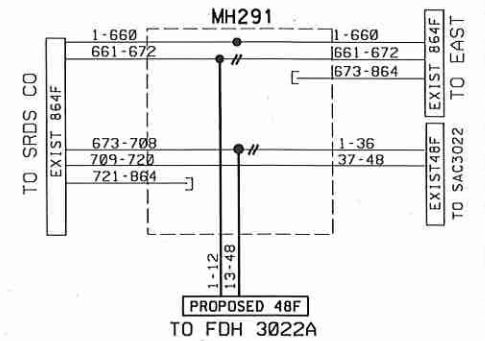
48F PSP DSLT
SRDS_F12.673-720
D.1-36
SRDS_F12.709-720



SPLICE #2 DETAIL



SPLICE #3 DETAIL

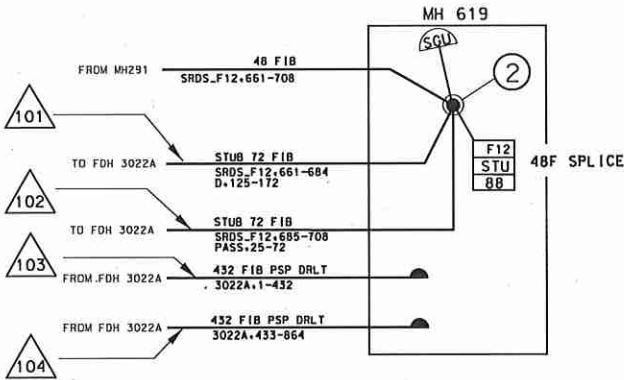


PULL IN DUCT FROM 3022A TO MH619
20M TAIL IN MH619
STUB 72 FIB (50mE)
SRDS_F12.661-684
D.125-172

PULL IN DUCT FROM 3022A TO MH619
20M TAIL IN MH619
STUB 72 FIB (50m EST)
SRDS_F12.685-708
PASS.25-72

PULL IN DUCT FROM 3022A TO MH619 (50mE)
20M TALE IN MH619
432FIB PSP DRLT
3022A,1-432

PULL IN DUCT FROM 3022A TO MH619 (50mE)
20M TALE IN MH619
432FIB PSP DRLT
3022A,433-864



MH619 UNDERGROUND DETAIL

- (557) ACCEPTANCE TO SRDS CO (CRAFT) (2034mE) - 7.5HRS
- (558) ACCEPTANCE TO SRDS CO (TECH) (2034mE) - 2.5HRS

WARNING
TELUS FIBRE OPTIC CABLE
48FIB PSP DSLT
SRDS.F12.661-708
NW# 2636305
DO NOT TOUCH

WARNING
TELUS FIBRE OPTIC CABLE
SRDS.F12.685-708
PASS,25-72
NW# 2636305
DO NOT TOUCH

WARNING
TELUS FIBRE OPTIC CABLE
432FIB PSP DRLT
3022A,433-864
NW# 2636305
DO NOT TOUCH

WARNING
TELUS FIBRE OPTIC CABLE
432FIB PSP DRLT
3022A,1-432
NW# 2636305
DO NOT TOUCH

WARNING
TELUS FIBRE OPTIC CABLE
STUB 72F
SRDS.F12.661-684
D.125-172
NW# 2636305
DO NOT TOUCH

YELLOW PLASTIC UNDERGROUND TAGS
NUMBER REQUIRED: 6

YELLOW PLASTIC UNDERGROUND TAGS
NUMBER REQUIRED: 6

YELLOW PLASTIC UNDERGROUND TAGS
NUMBER REQUIRED: 6



CONSTRUCTION		PERMIT	DESIGN: COB	DR: COB	THE WORKS PROPOSED ON THIS DRAWING SHALL AT ALL TIMES REMAIN THE PROPERTY OF TELUS	
REV. DESCRIPTION:		SUBMITTED DATE:	PH: 256-999-4945	SCALE: NTS	PROPOSED D/D CONSTRUCTION	
REV. DESCRIPTION:		RE-SUB DATE:		DATE: JUNE 19 2017	864 FDH CABINET & SPLITTERS FOR 3022A	
REV. DESCRIPTION:		RE-SUB DATE:	ASSOCIATED DRAWINGS		THOMAS ROAD S/O PROMONTORY ROAD	
REV. DESCRIPTION:		APPROVED:	glna.dnbar@telus.com		CITY OF CHILLIWACK	
REV. DESCRIPTION:		DATE:			2636305	EXCHANGE: SRDS
REV. DESCRIPTION:		AS CONSTRUCTED DATE:			SHEET 1 OF 1	
REV. DESCRIPTION:		CONTRACTOR:			TELUS	OP ENGINEERING
REV. DESCRIPTION:						11x17